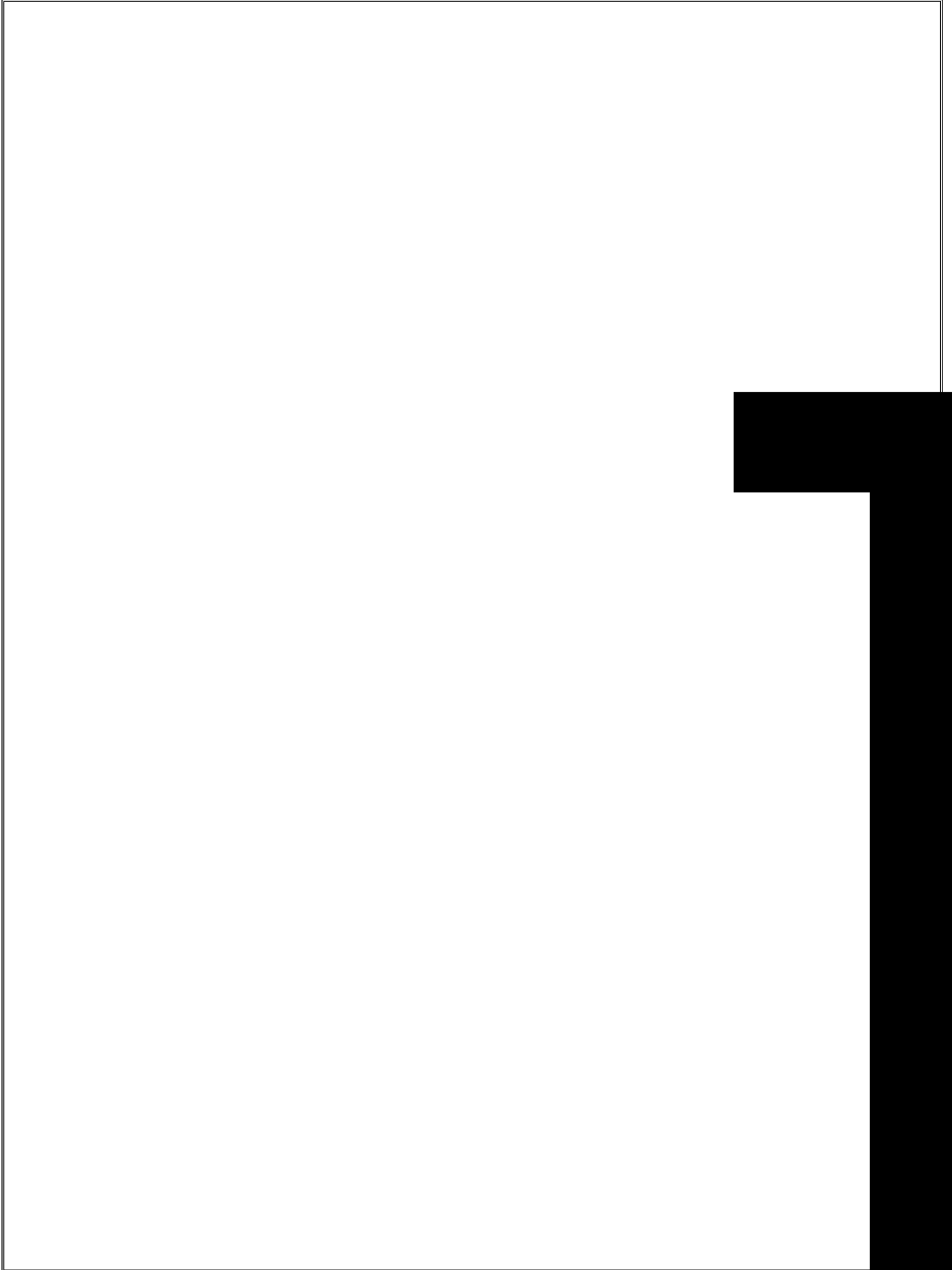
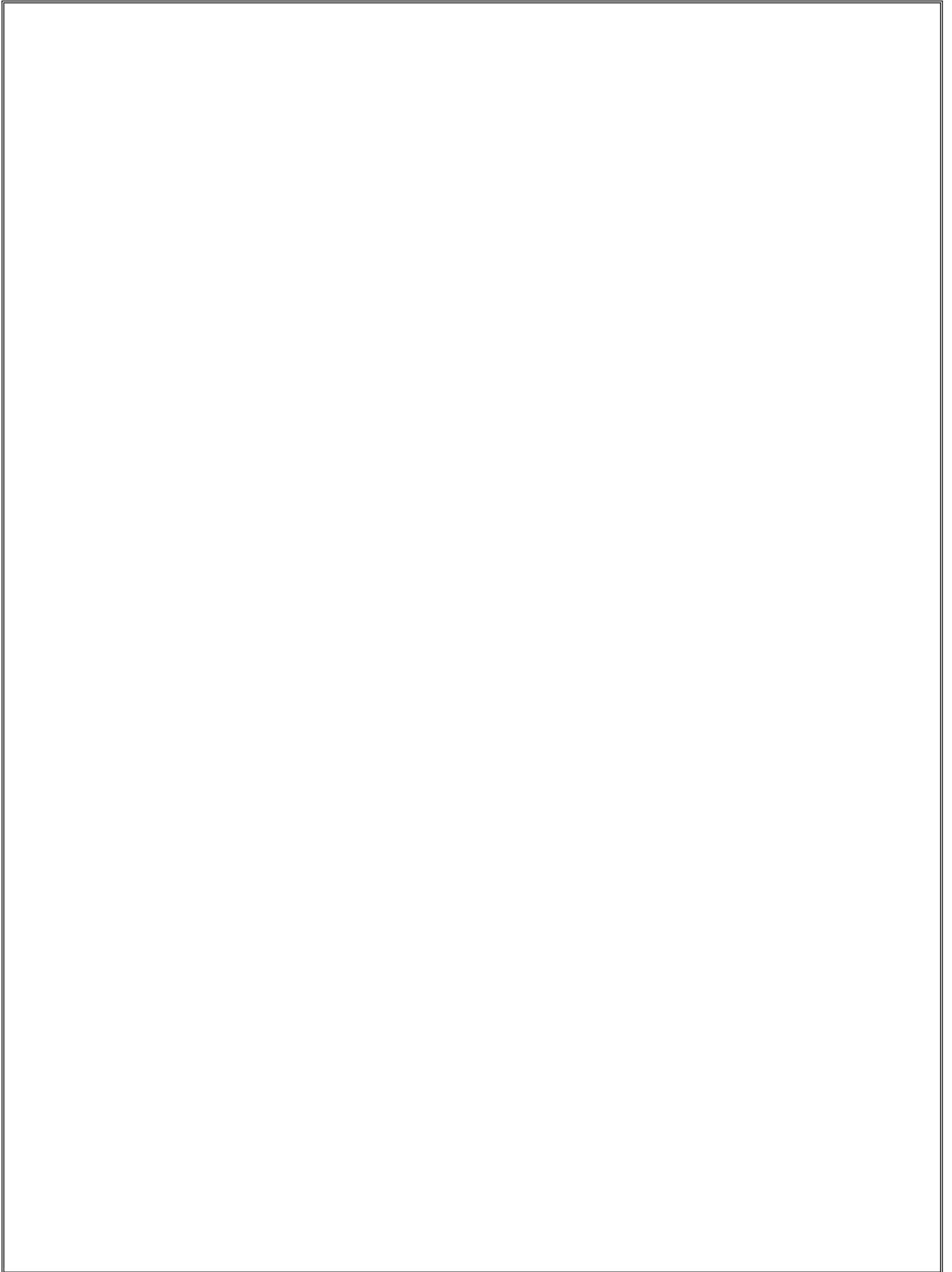


High Power AC LED Module
P/N: HL-LE002F9VW-10B1C30(Ra2)

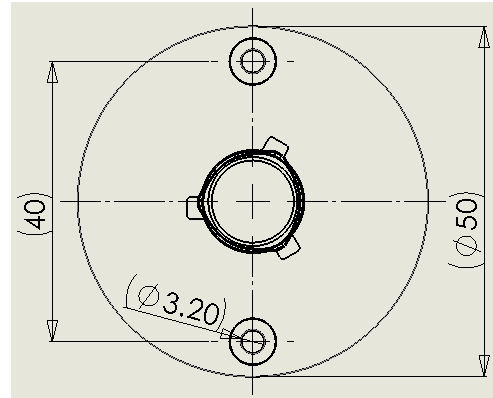
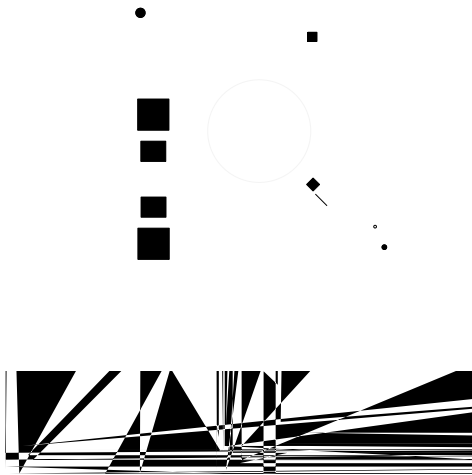




4.Package Dimensions

Tolerance unless otherwise specified: ±0.3mm.

±0.3



The products supporting PC snaps.

PC

5.Performance

(1) Absolute Maximum Ratings

Parameter	Symbol	Rating Value	Units
Maximum Voltage	V_{OPT}	250	V[RMS]
Power Dissipation	P_D	11	W
Junction Temperature (1)	T_{j-LED}	120	
	T_{j-IC}	125	
Top of the IC temperature IC	T_p	100	
Operating Temperature Range	T_{op}	-	
Storage Temperature Range	T_{stg}	-	
ESD Sensitivity	ESD		
Lead Soldering Temperature*	T_{SOL}		

Notes for Table

1 The capacity of heat sink $T_{j-ic} < 125$

$$T_{j-ic} = T_p + P_{IC} * R_{IC} \quad P_{IC} = 1W \quad R_{IC} = 22 \text{ /W} \quad T_p \text{ surface temperature of IC}$$

$$T_{j-ic} < 125$$

$$T_{j-ic} = T_p + P_{IC} * R_{IC} \quad P_{IC} = 1W \quad R_{IC} = 22 \text{ /W} \quad T_p = IC$$

(2) All extreme conditions need to be satisfied.

(2) Electro-Optical Characteristics

Tc=25°C

at Tc=25°C

Parameter	Symbol	Condition	Min.	Typ.	Max.	Unit
Operating Voltage (1)	V _{OPT}	—	200	230	250	V
Power Dissipation	P _D	V _{OPT} =230V 50HZ	9.5	10	10.5	W
Luminous Flux	Φ _v	TC=3000K	900	980	1070	lm
		TC=5700K	930	1010	1100	
CRI	R _a	V _{OPT} =230V 50HZ	80	—	—	—
Power Factor	PF	V _{OPT} =230V 50HZ	0.95	—	—	—
Tolerance of Surge *(7)	V _s	—	500	—	—	V

Notes for Table

1. Operating Voltage doesn't indicate the maximum voltage which customers use but means

2. Color bins are defined at transient operation

3. The tolerance of measurement at our tester is Φ_v+/-10% and Ra+/-2.

5.

6. Φ_v is the total luminous flux output measured with an integrated sphere.

7. Surge is defined as damage that may occur when an electronic device is subjected to a voltage that is beyond the maximum specification limits of the device.

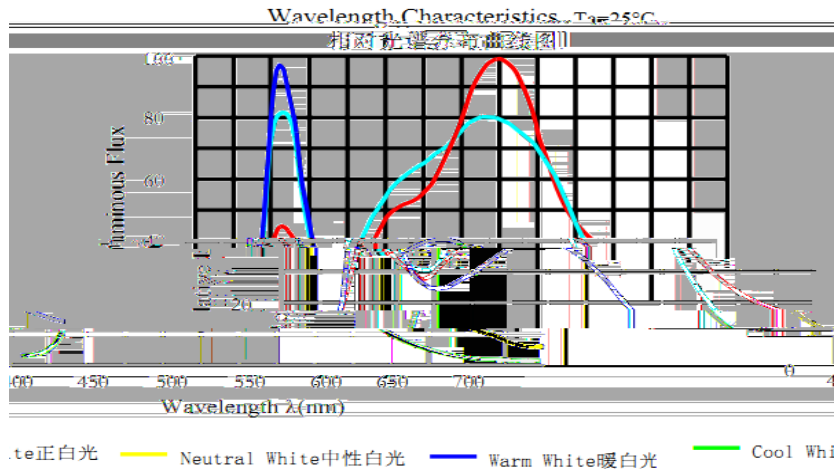
Refer to the note 3 .

3.

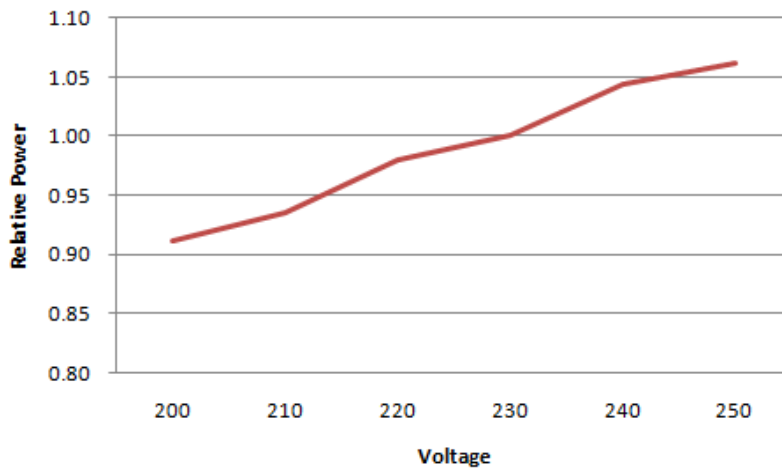
8. Base Board 1.0mm ceramic substrate Thermal resistance 20 W/ m.K
 1.0mm 20W/ m.K

6.Characteristics

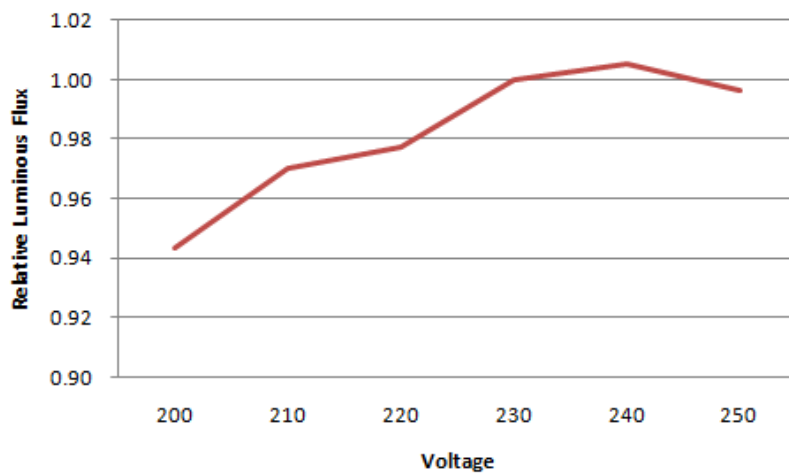
6.1 Color spectrum



6.2 Relative Power Distribution vs. Voltage at Ta=25

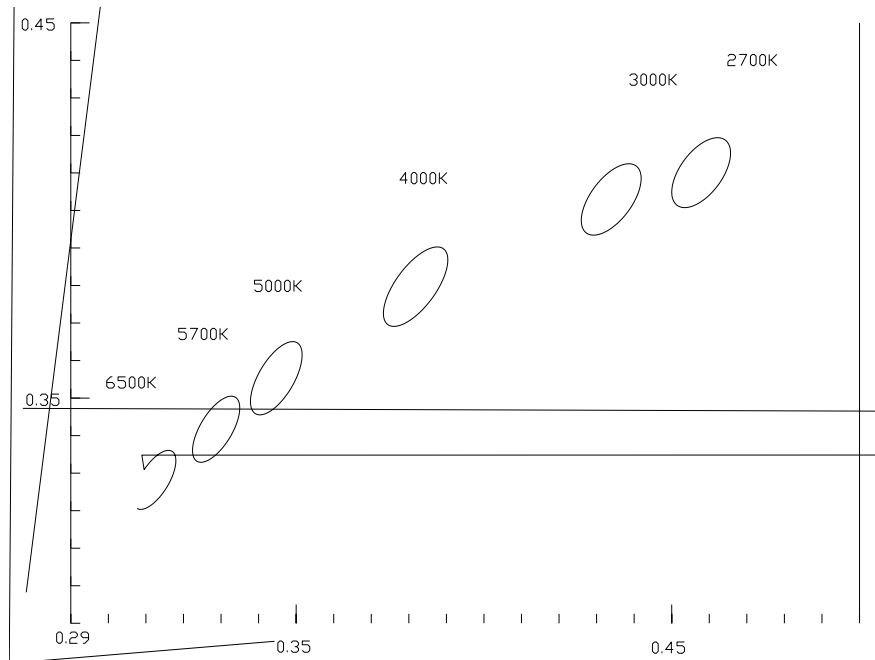


6.3 Relative Luminous flux vs. Voltage at Ta=25



7.Product bins

Chromaticity bins



Center TC	2725K	3045K	3985K	5028K	5665K	6530K
X,Y	0.4578,0.4101	0.4338,0.403	0.3818,0.3797	0.3447,0.3553	0.329,0.3417	0.3123,0.3282

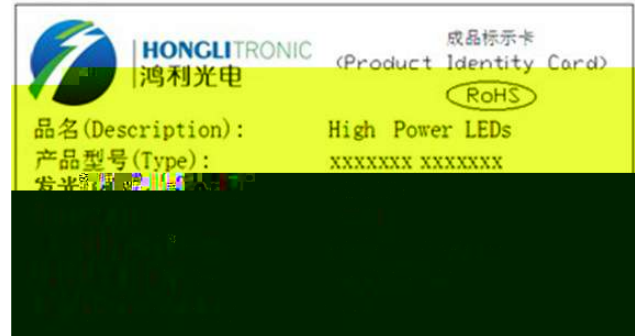
Notes

- The chromaticity center refers to ANSI C78.377-2008 bin ANSI C78.377-2008

8.Packing Specifications



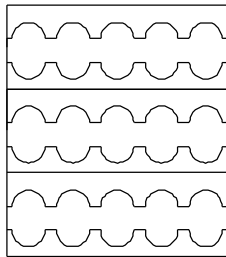
Label on blister packaging



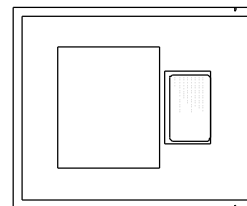
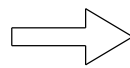
Label on box

V: Luminous Flux rank
TC: Color temperature

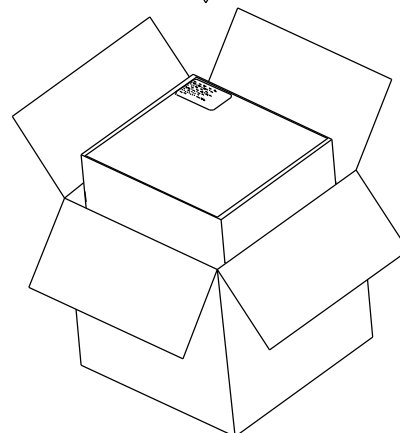
Packing figure



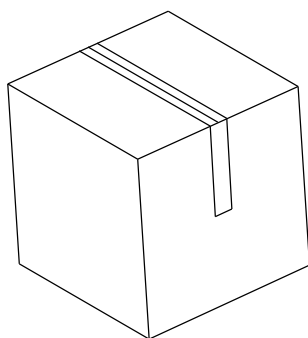
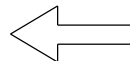
Tray: 15pcs



2Tray/ESD Shilding Bag: 30p cs



3ESD Shilding Bag/Inner Box: 90pcs



4Inner Box/Outer Box:360pcs

Precautions ()

1. Storage

To avoid moisture, we recommend storage conditions for the unopened LED

ing the package. Please make sure to dehumidify and vacuum pack the remaining/

for the sealed led is one year.

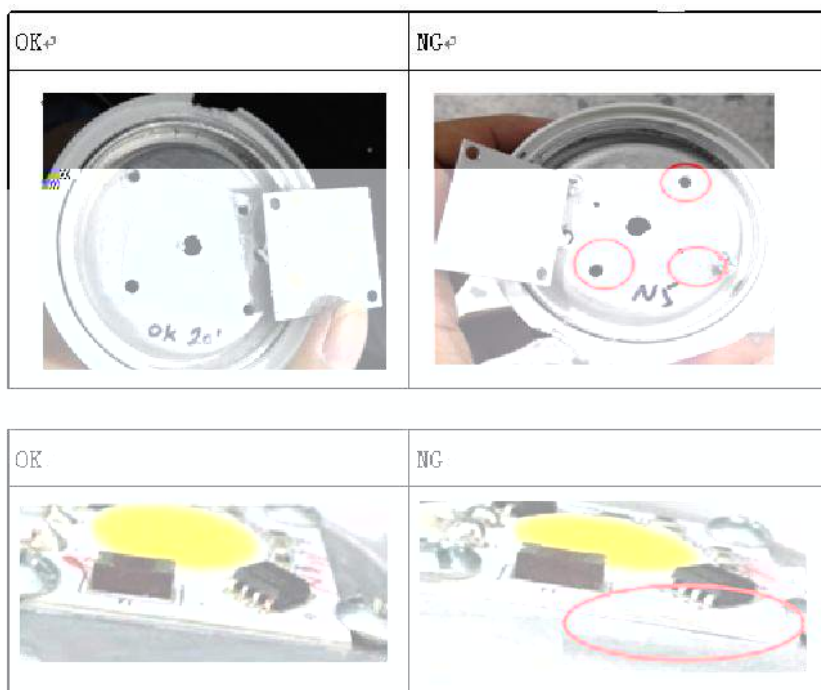
5-

60% LED 168H

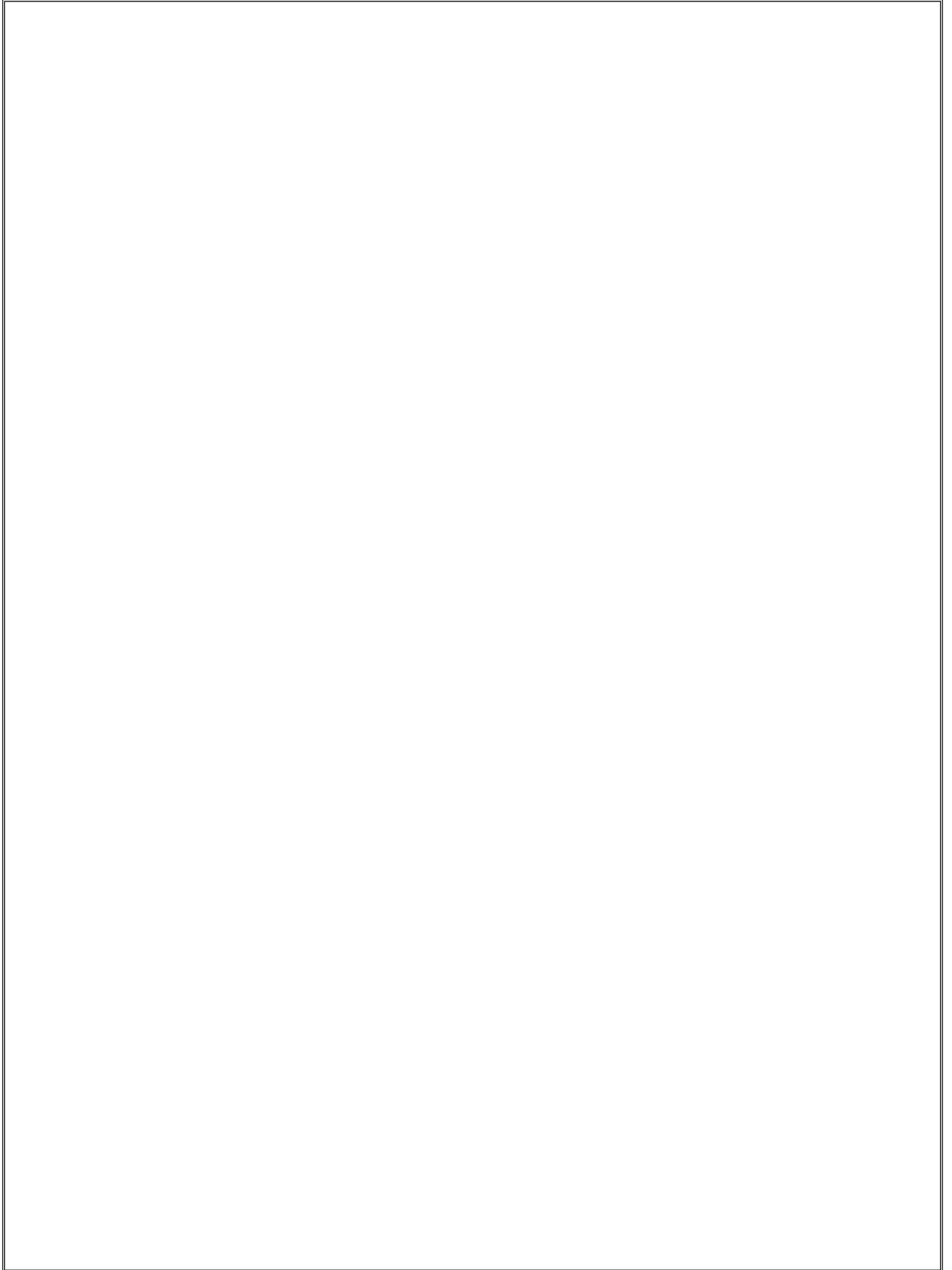
4H

2. The soldering precautions

During assembly, please ensure that a good quality thermal paste is applied and distributed evenly over the surface. While using thermal pad (Heat Sink), make sure LED is firmly tightened and there is no gap between surfaces.



High Power AC LED Module
P/N: HL-LE002F9VW-10B1C30(Ra2)



High Power AC LED Module
P/N: HL-LE002F9VW-10B1C30(Ra2)

